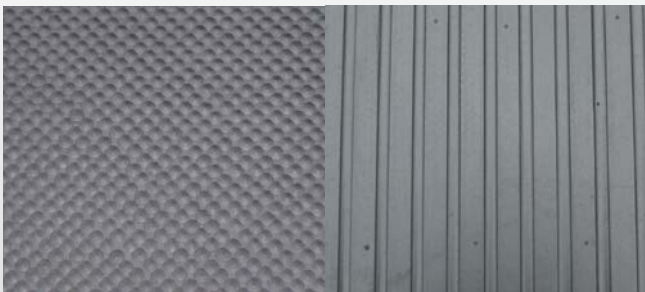


GROUND RING MAT

CODE	SIZE MM	WEIGHT KG
4191-1507	1500 x 1000 x 16	14
4192-1507	1500 x 1000 x 23	18

The ideal solution for muddy gateways. Free draining perforated mats reduce poaching and create a stable walking surface. Use singly or cable-tie together. Also suitable for washdown areas.



WYCOMBE STABLE MAT

CODE	SIZE MM	WEIGHT KG
4091-1857	1830 x 1220 x 17	40
4093-1857	1830 x 1220 x 10	25

Made from non-porous, high quality solid rubber, this mat has a tortoiseshell top surface with a wide rib base. Suitable for all horsebox, stable and walkway applications.

STANBRIDGE STABLE MAT

CODE	SIZE MM	WEIGHT KG
4089-1857	1830 x 1220 x 17	38

Made from solid rubber with a bubble top surface and a wide rib base. Suitable for stable, horsebox and walkway applications.



MOULDED RUBBER RAMP MAT

CODE	SIZE MM	WEIGHT KG
4100-2257	2300 x 2480	78
4100-2387	2300 x 2800	88

Ribbed ramp mat with integral rubber bars. The superb rib texture offers maximum slip resistance while the integral rubber bars, spaced to conform to DEFRA regulations, are also ribbed to ensure a secure foothold for both horse and handler. The mat is non-absorbent 100% rubber and can be hosed clean in seconds. The premium choice of most horsebox manufacturers. Available in two sizes with the largest mat designed to cover the gap between ramp and lorry.

E: sales@wwmuk.uk

W: www.wwmuk.uk

Thatchems Farm, Williamscot, Banbury, OX17 1AR

We also offer: Custom Shapes and Sizes
 On-site analysis and reports
 Measuring and fitting service
 Wide range of standard sizes available

UK AND
 IRELAND COVERAGE

Tel: **0845 658 8340** Fax: **0845 017 1352**